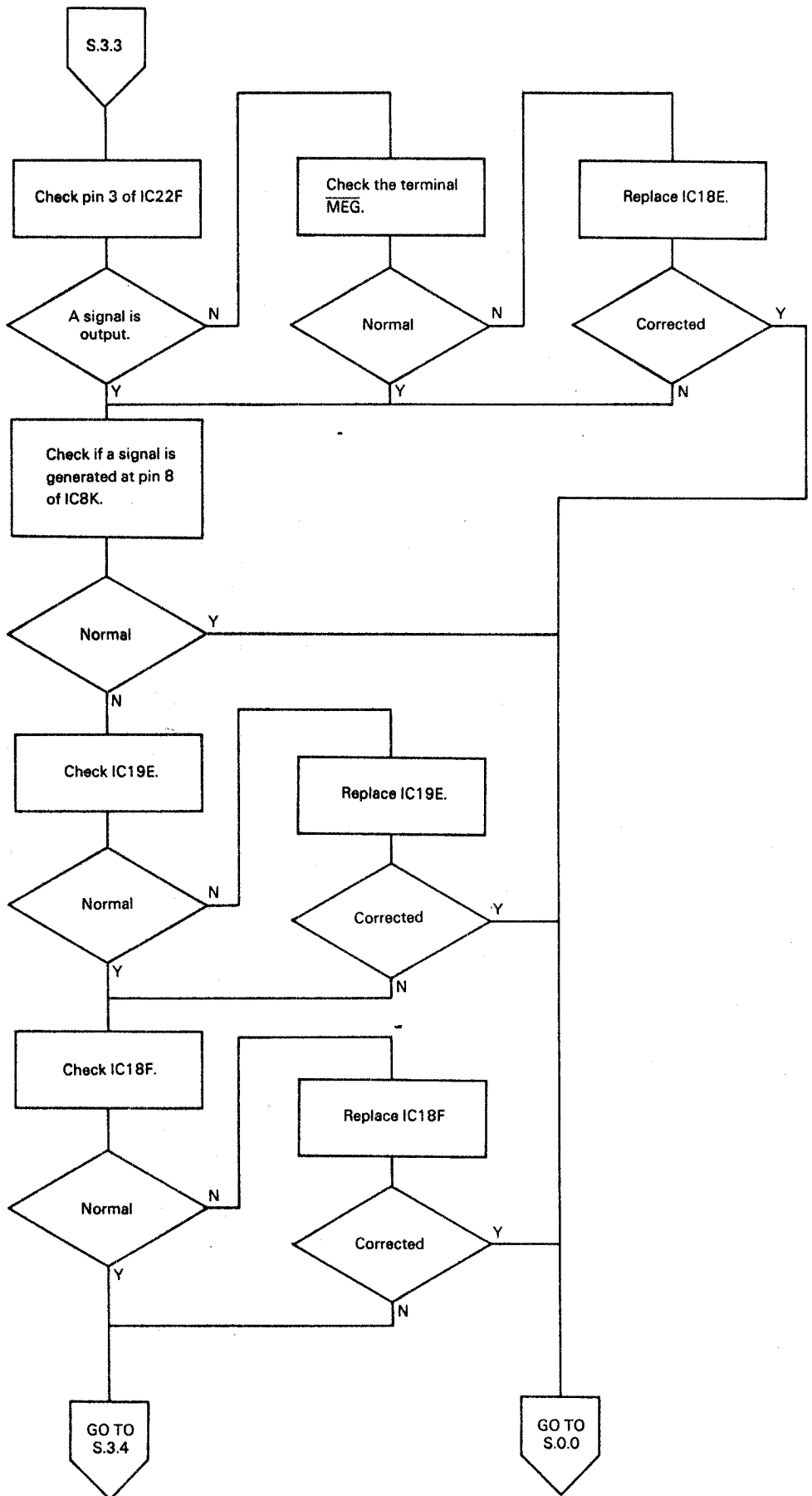
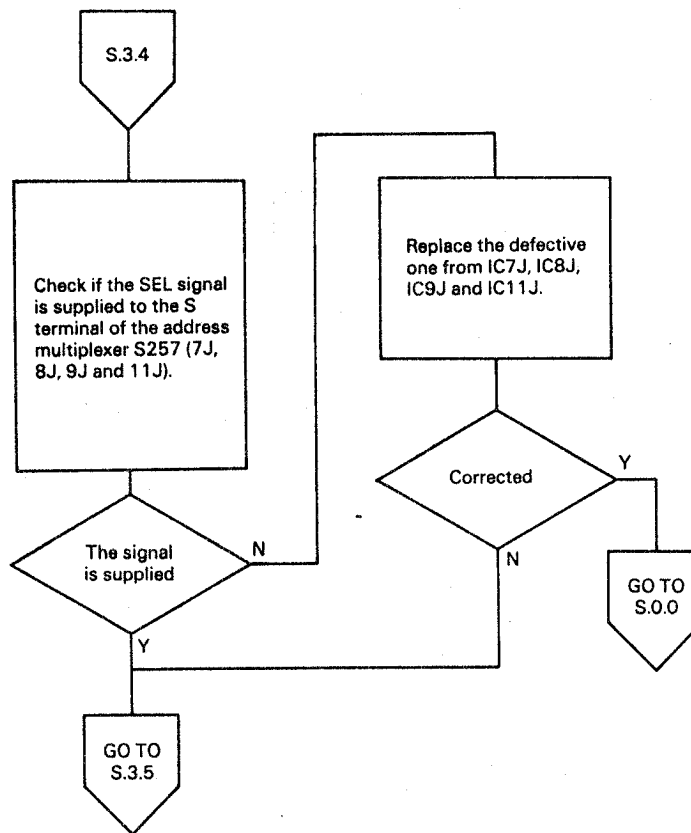


D-RAM select signal is not supplied.



Defective address multiplexer



WAIT signal is not supplied.

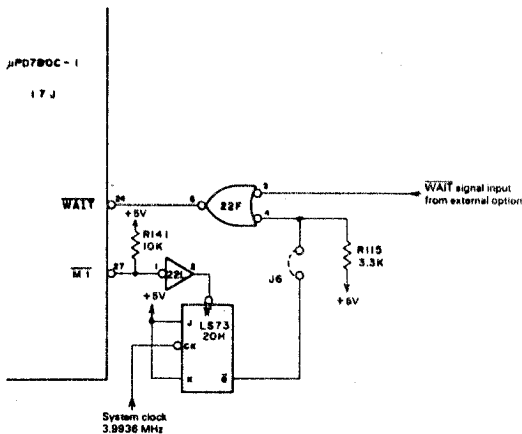
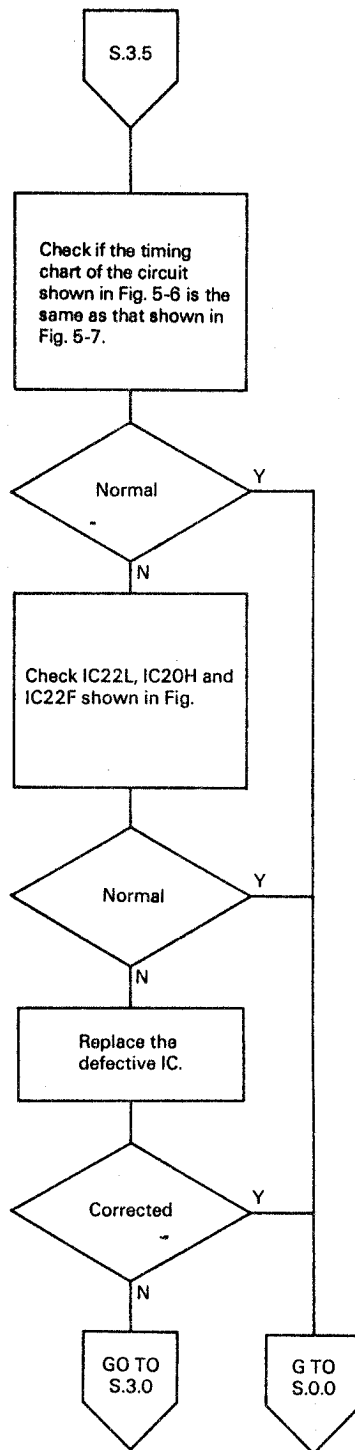


Fig. 5-6

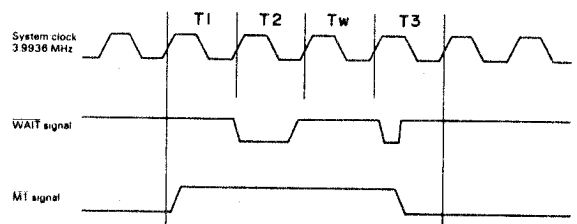
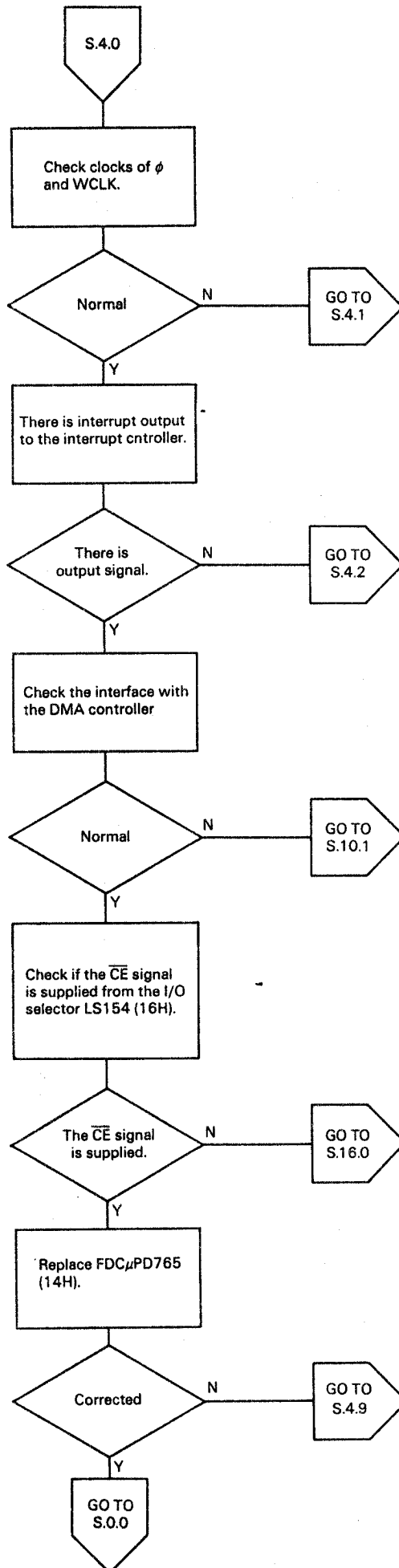
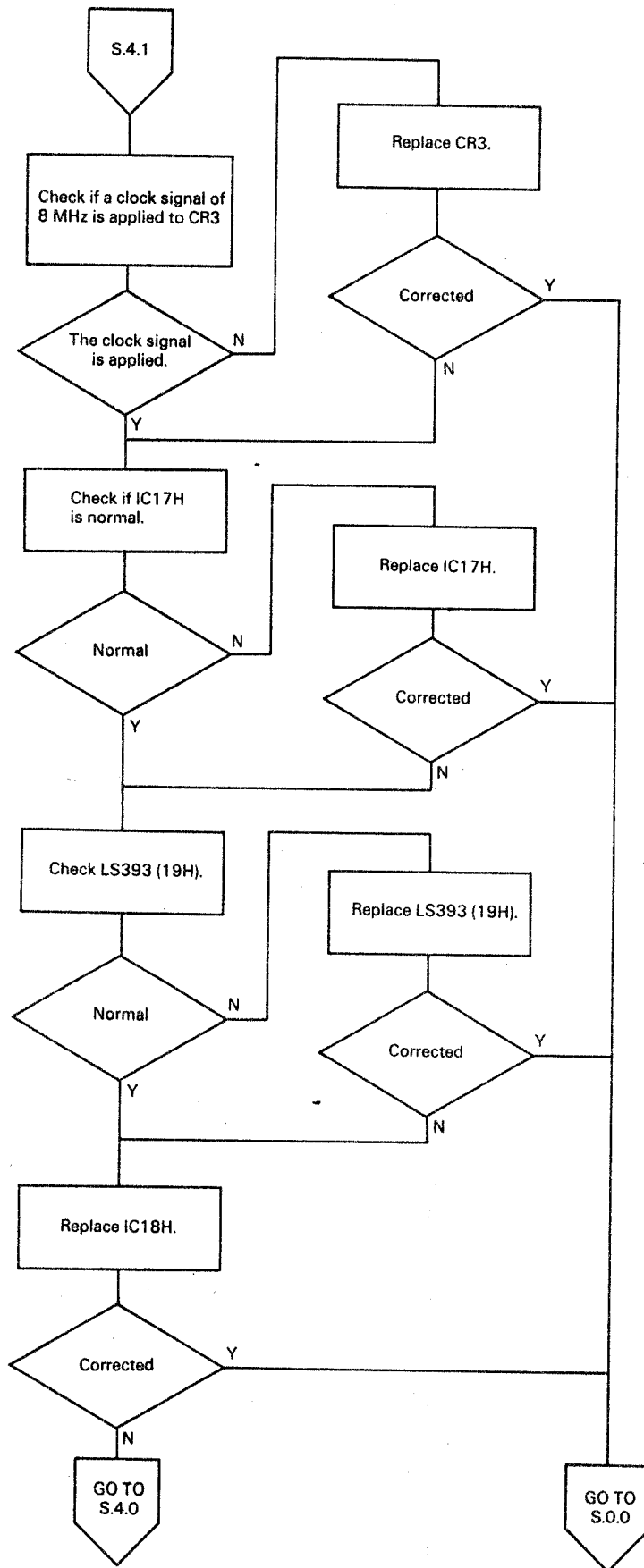


Fig. 5-7

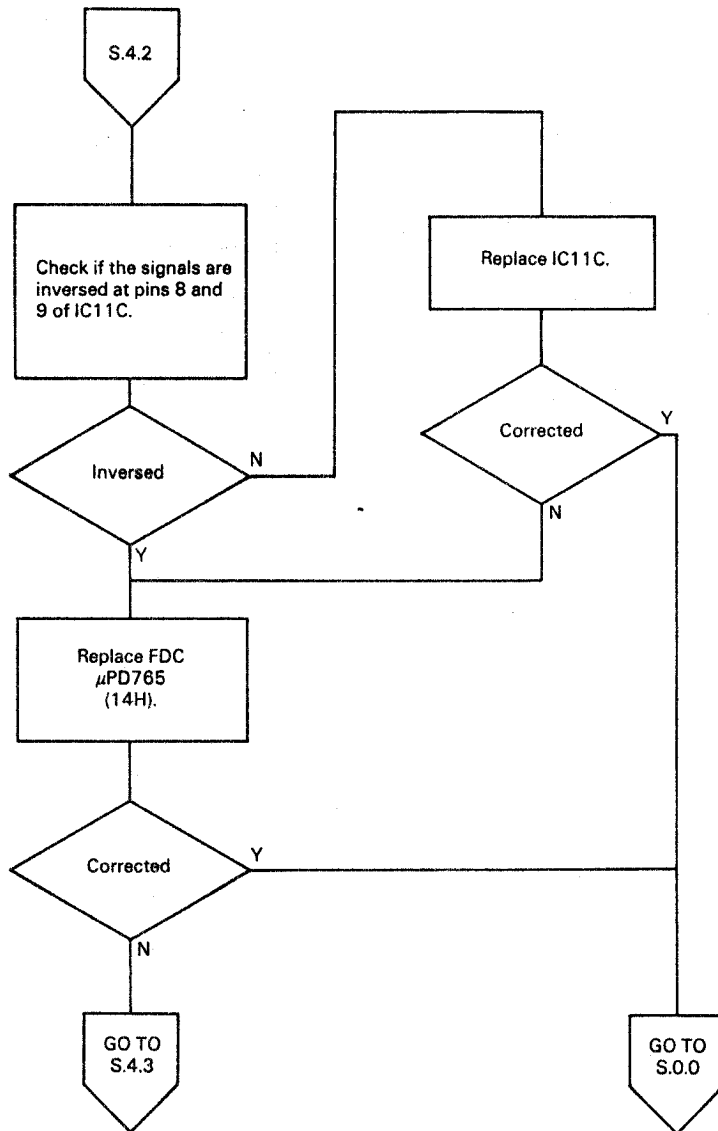
Defective FDC



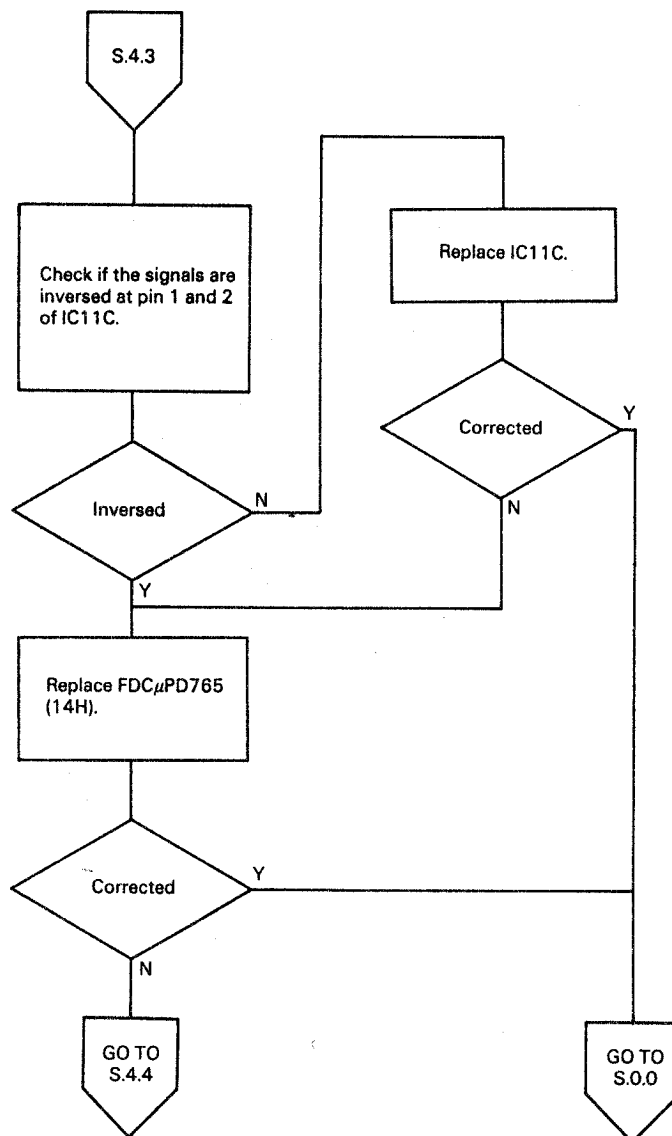
Defective clock generator to FDC



Defective FDC (Failure to go into the RDY state)

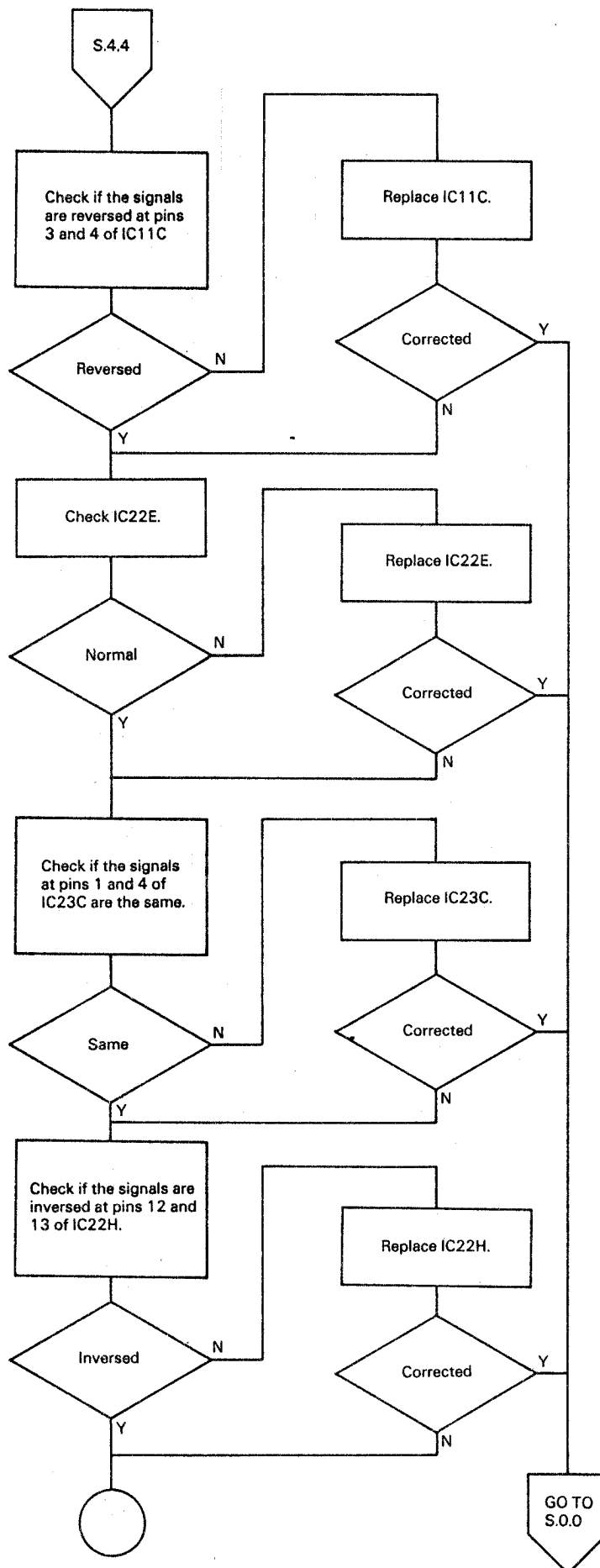


Failure to go into RDY

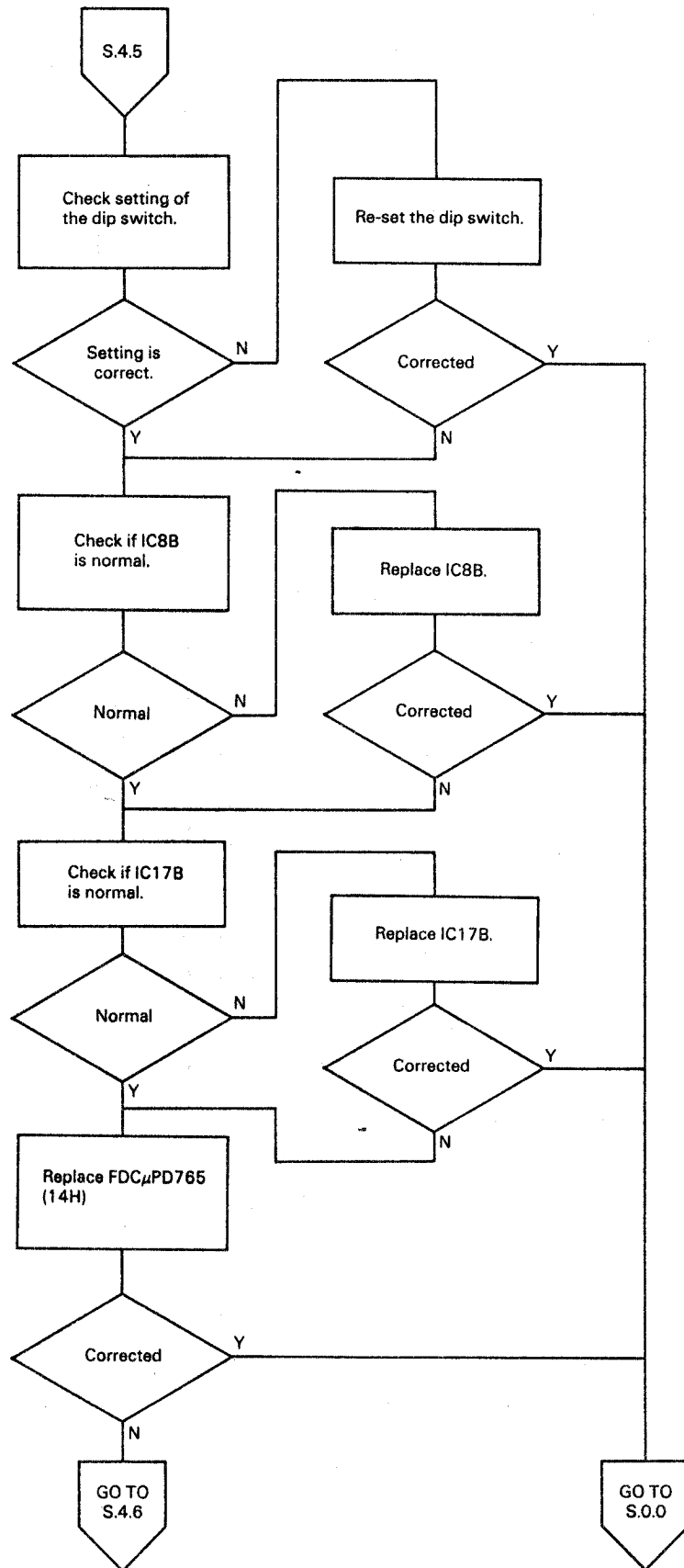


Failure to go into RDY

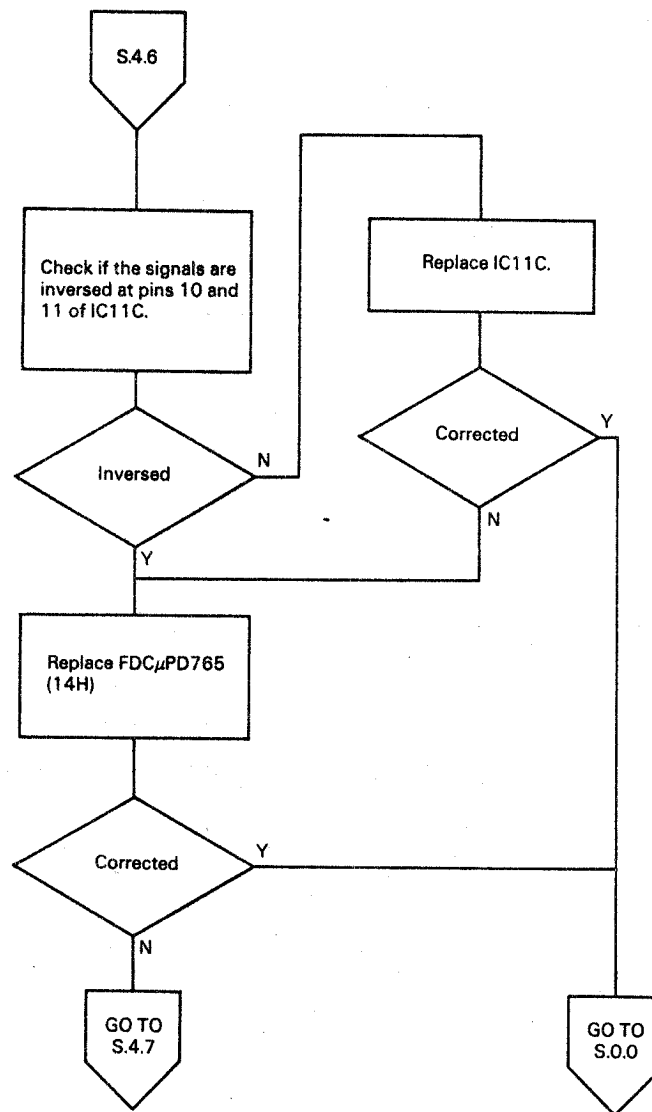
Failure of detecting TK10



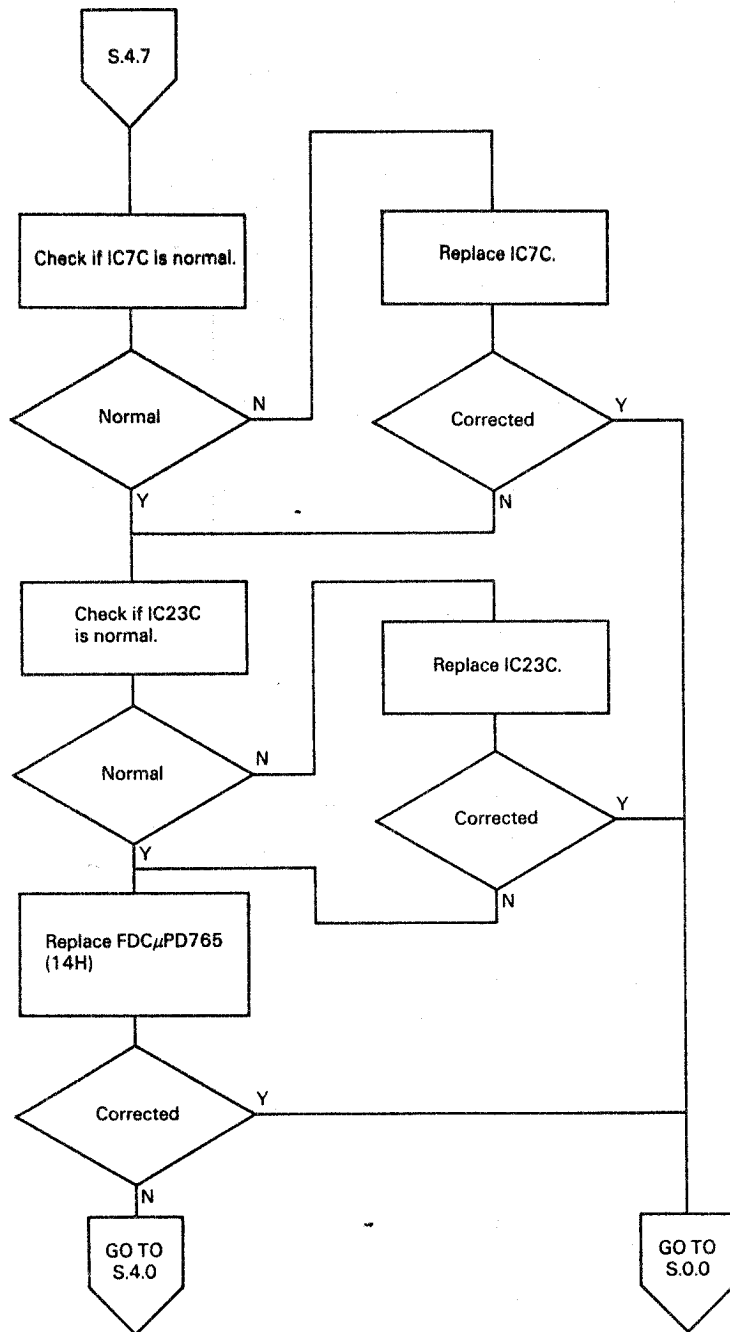
Failure of setting of drive select modes



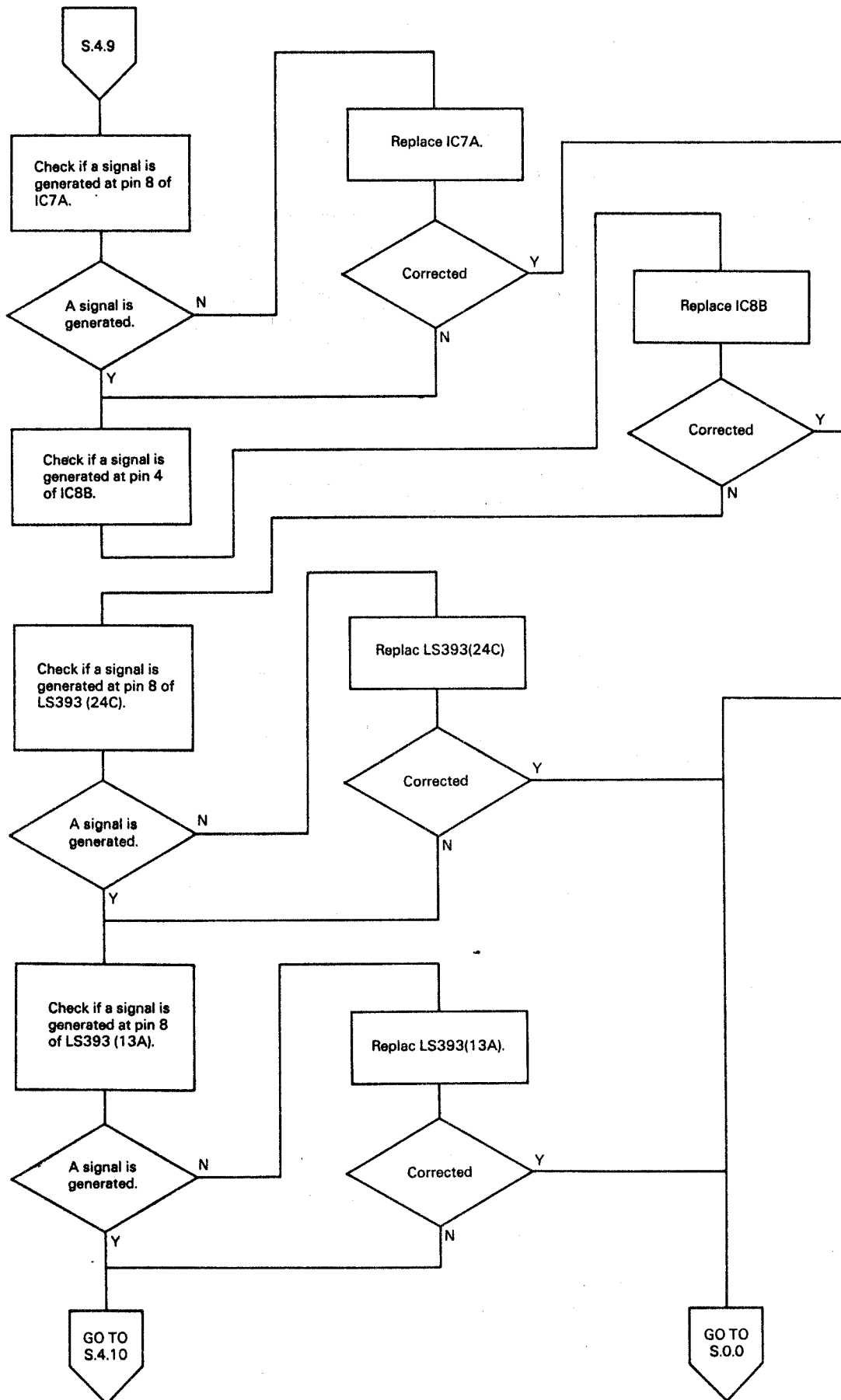
Defective write protect signal



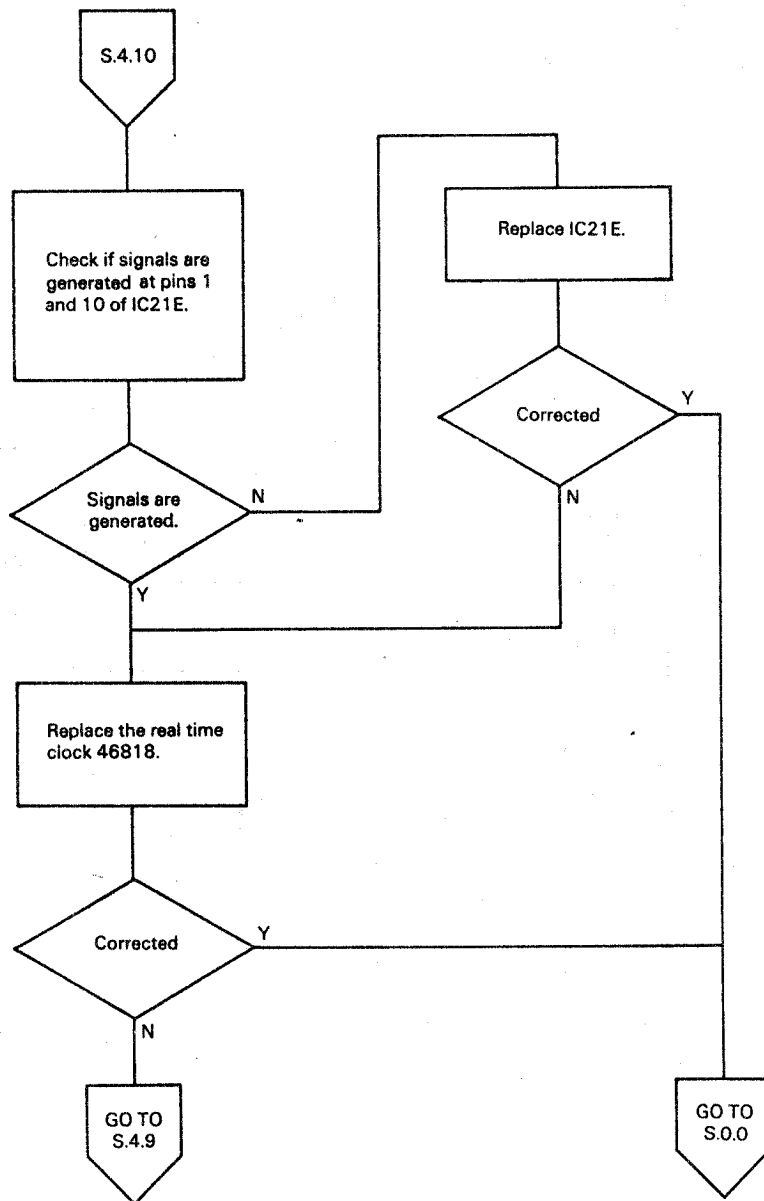
Failure of writing



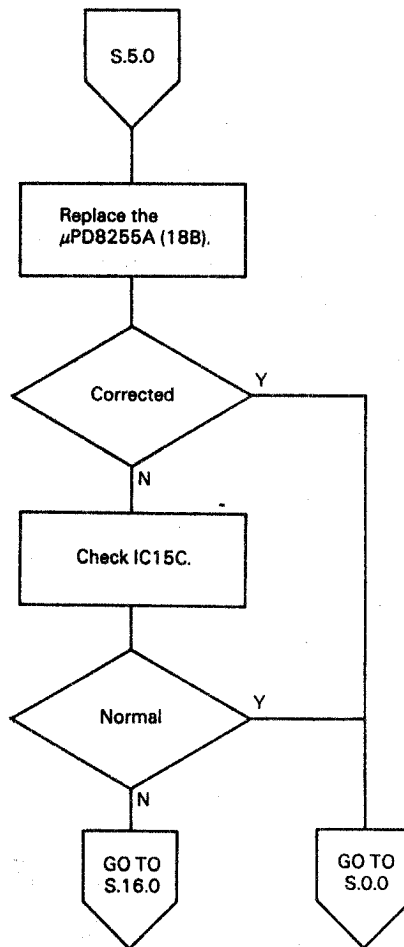
Defective FDD motor control circuit



Defective FDD motor control circuit



Defective Printer



Defective RS-232C

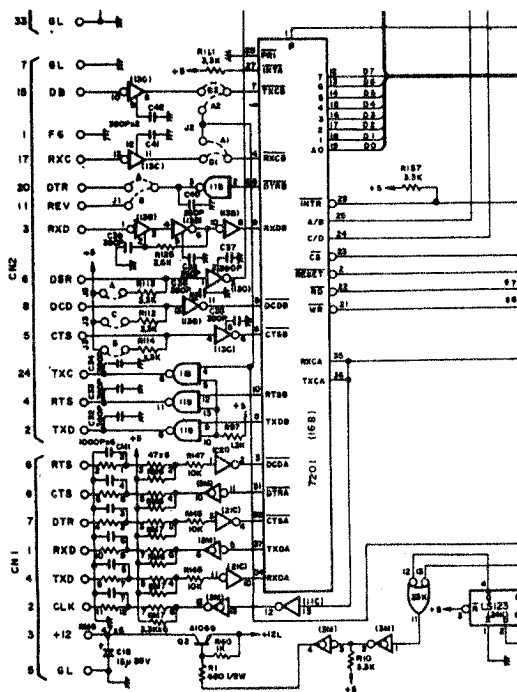
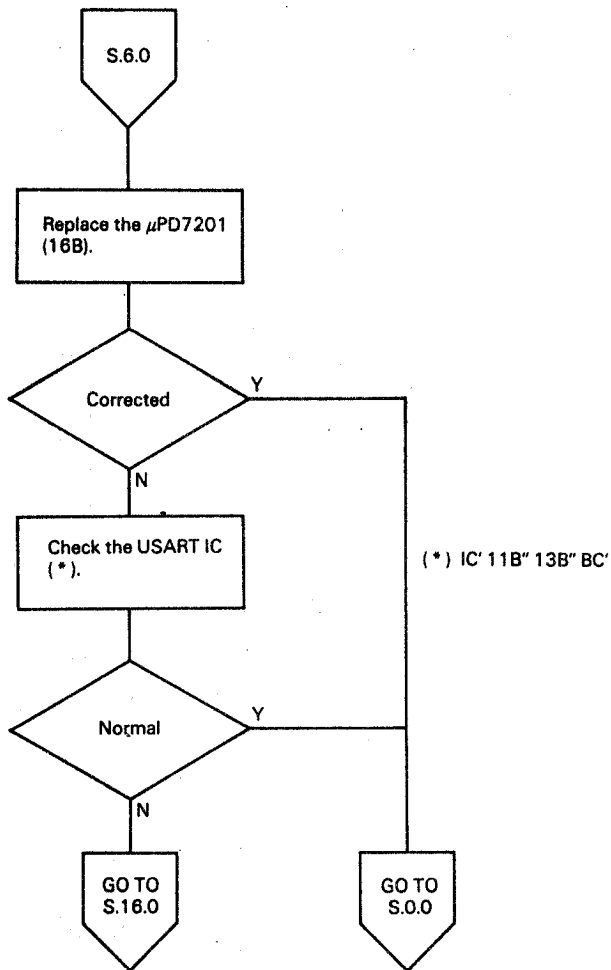
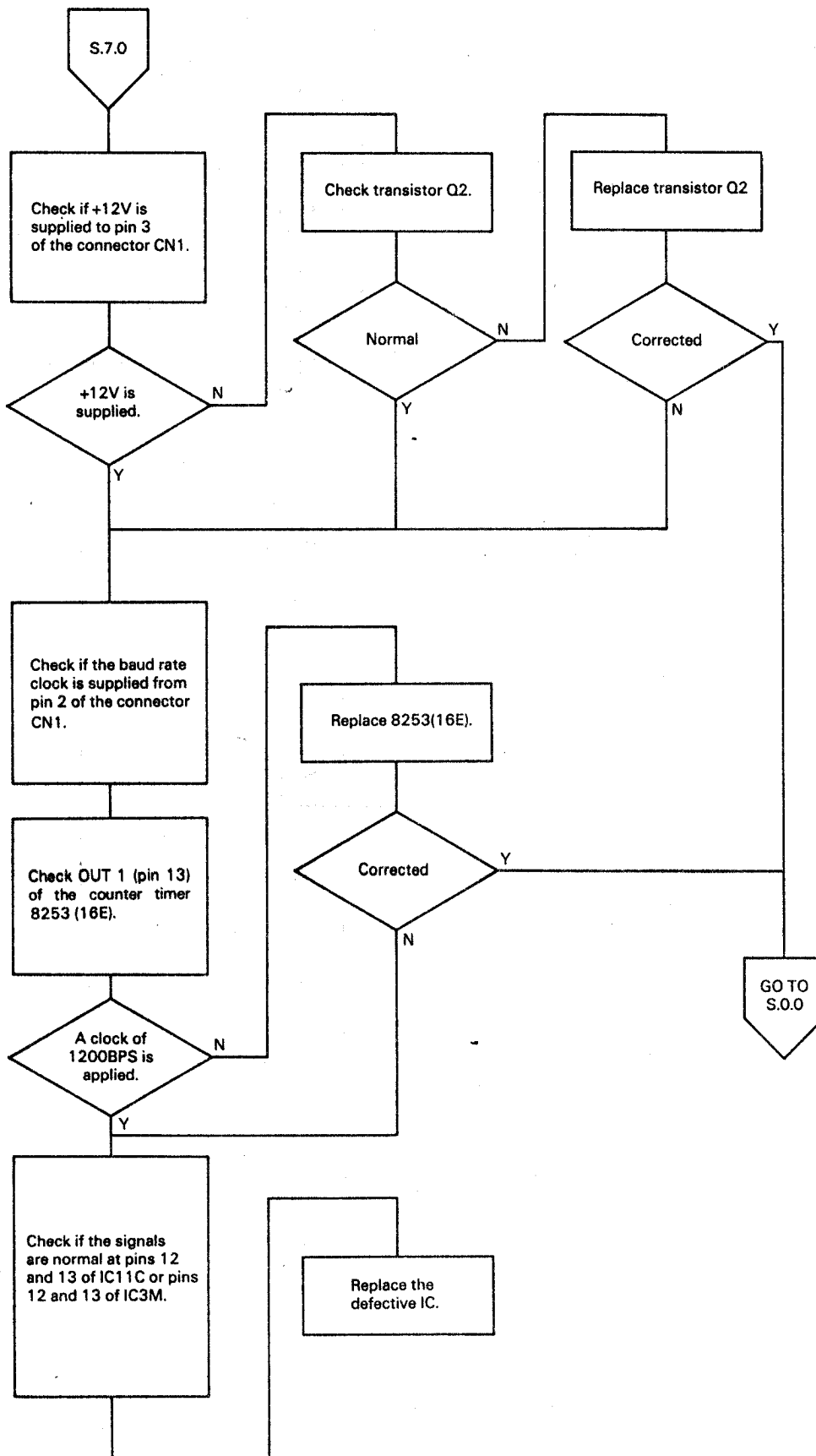
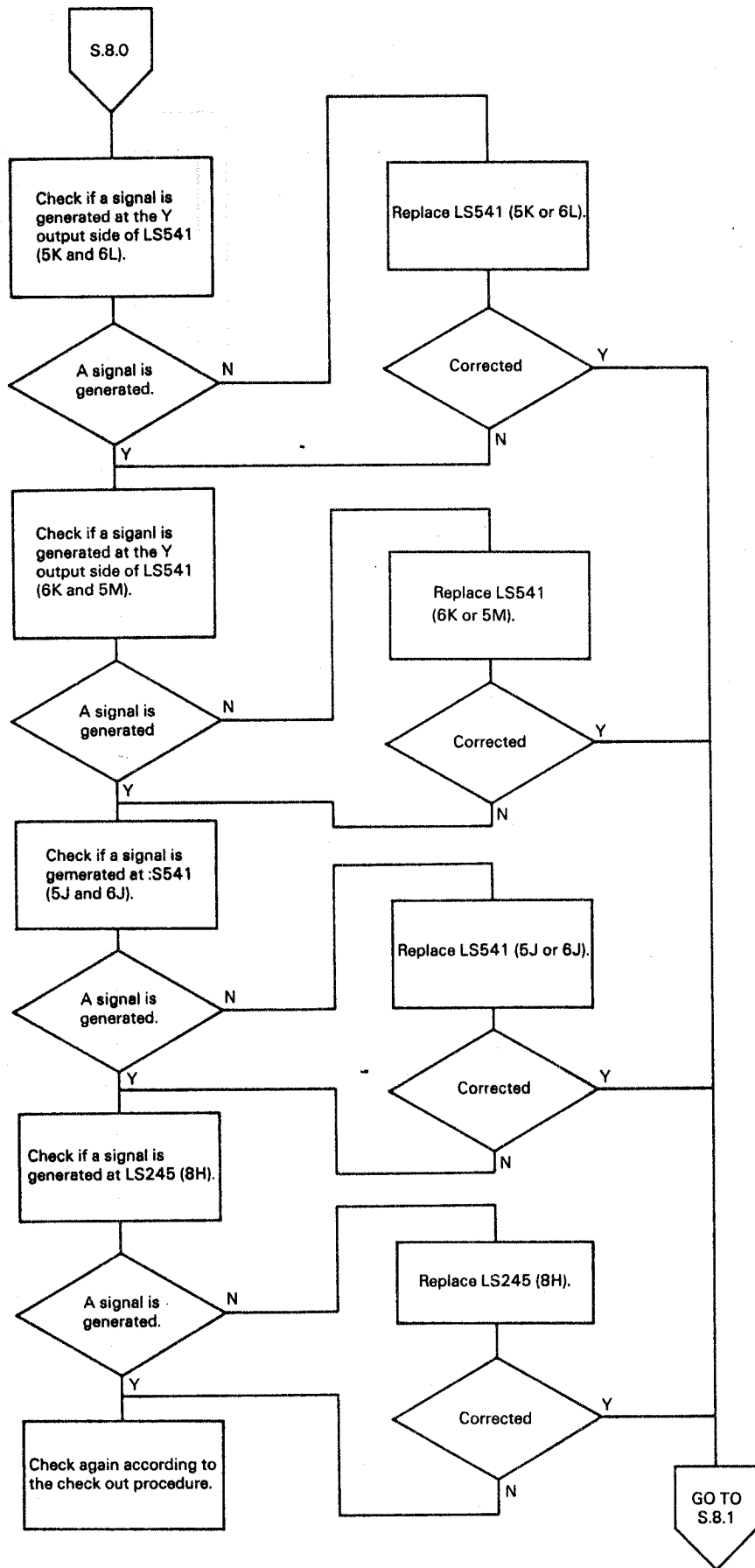


Fig. 5-8

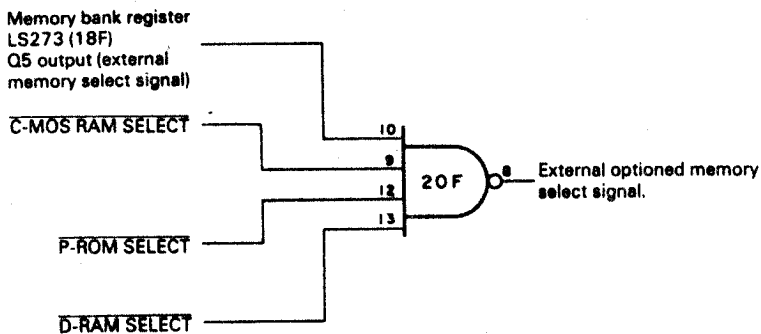
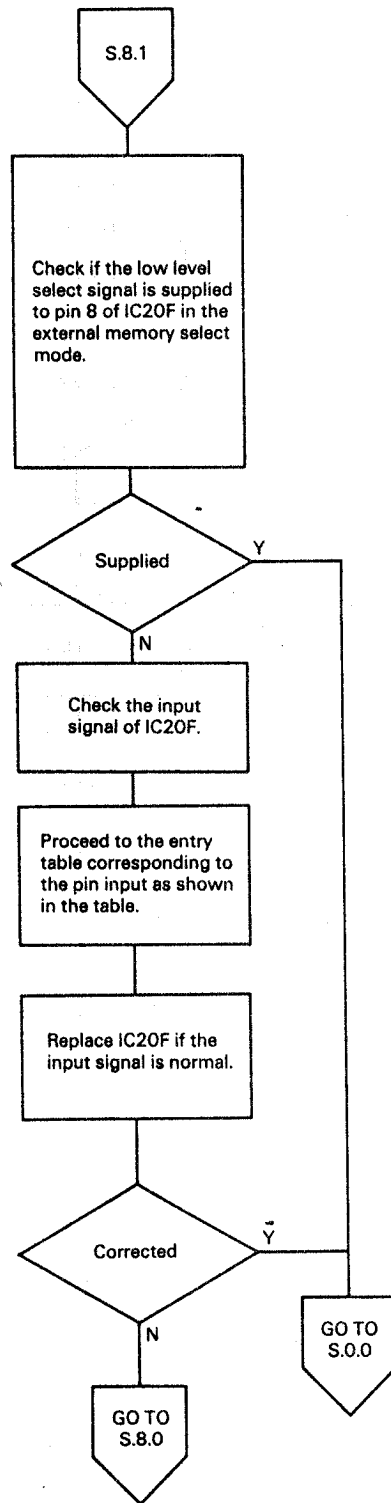
Defective keyboard



Defective option mode (Failure of data transfer)



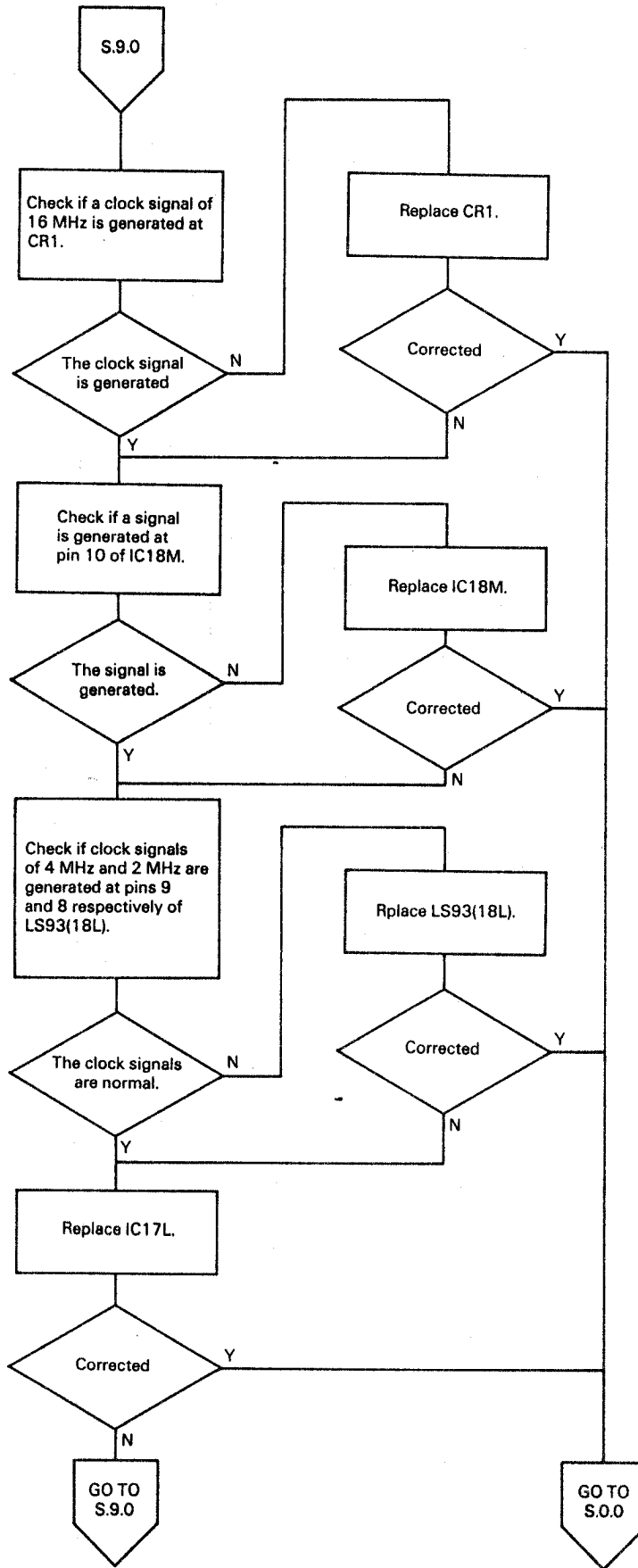
Failure of external memory selection



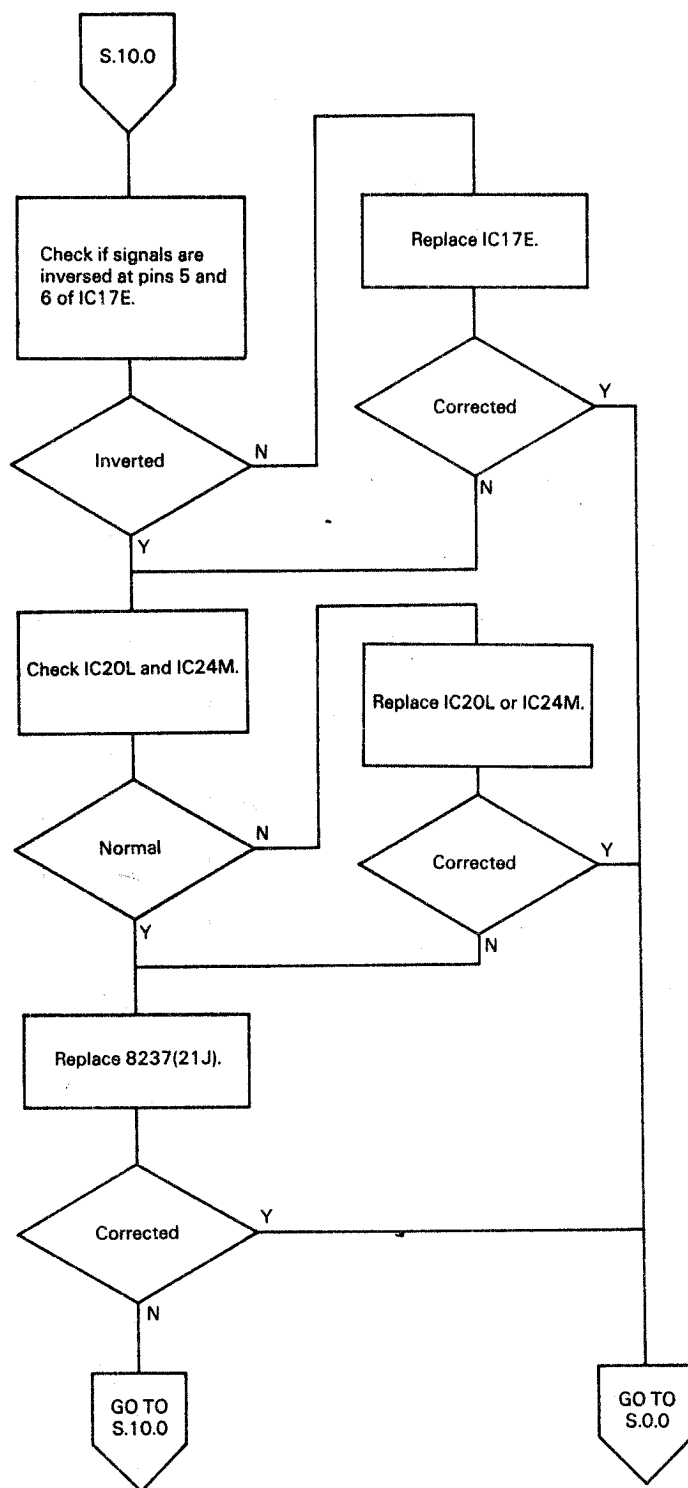
Pin No.	Signal name	Entry table
10	External memory select signal.	S.8.0
9	C-MOS RAM SELECT	S.13.0
12	P-ROM SELECT	S.1.0
13	D-RAM SELECT	S.1.0

Fig. 5-9

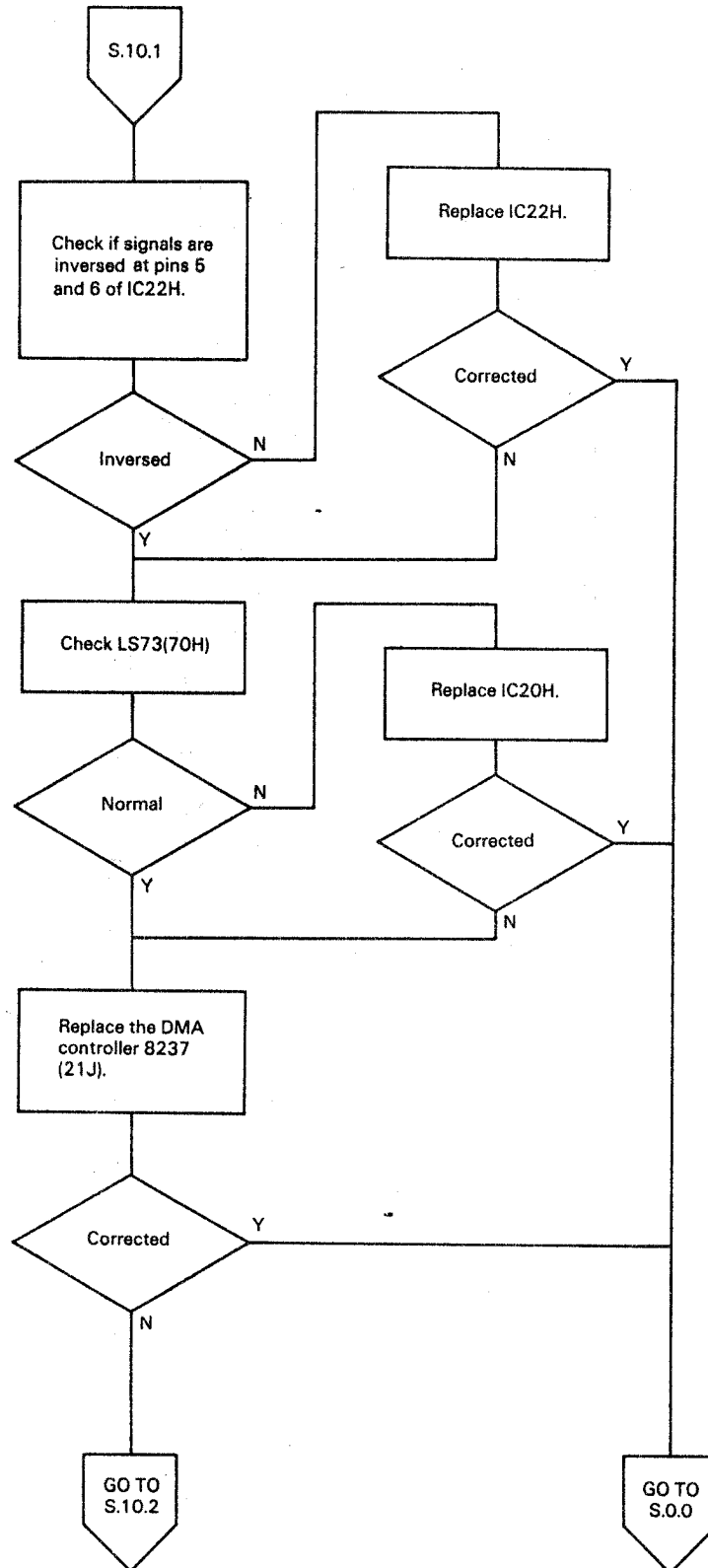
Defective system clock supply circuit



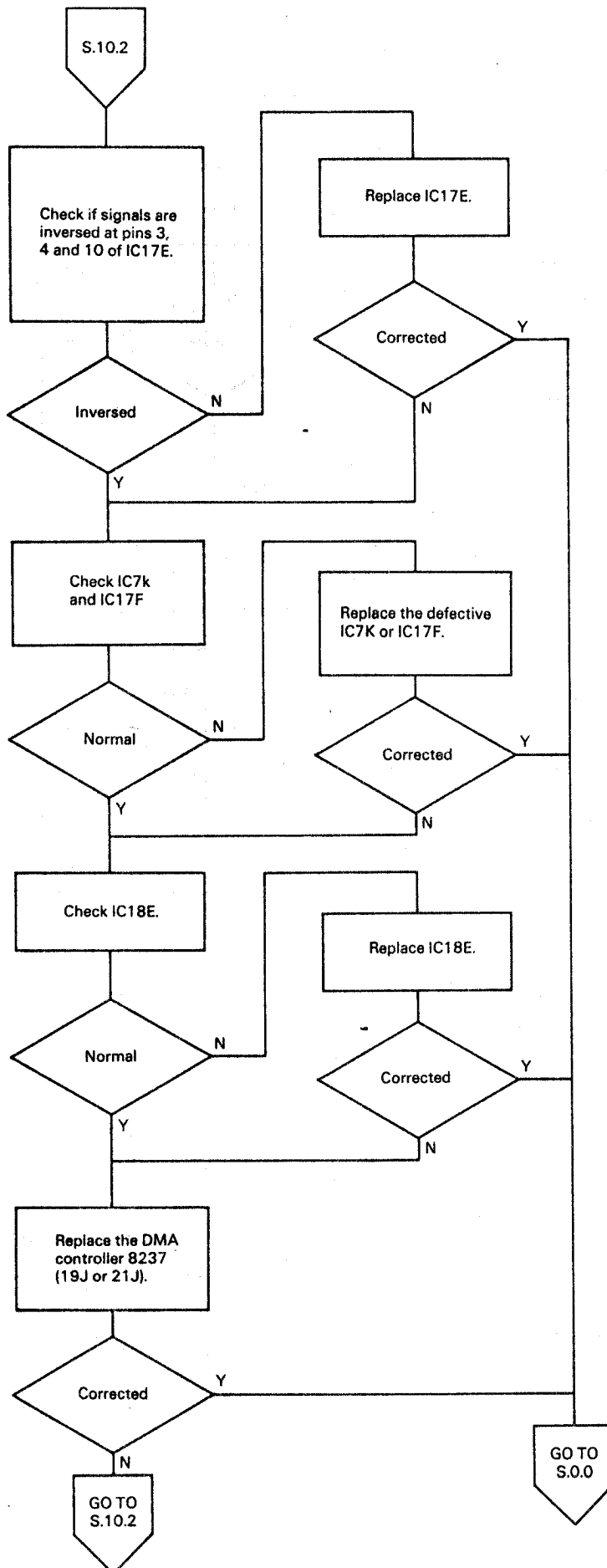
Defective DMA from CRT (defective DMA synchronizing circuit)



Defective FDC (Defective DMA)



DMA controller \overline{CS} signal circuit



Failure of DMA transfer from the option card

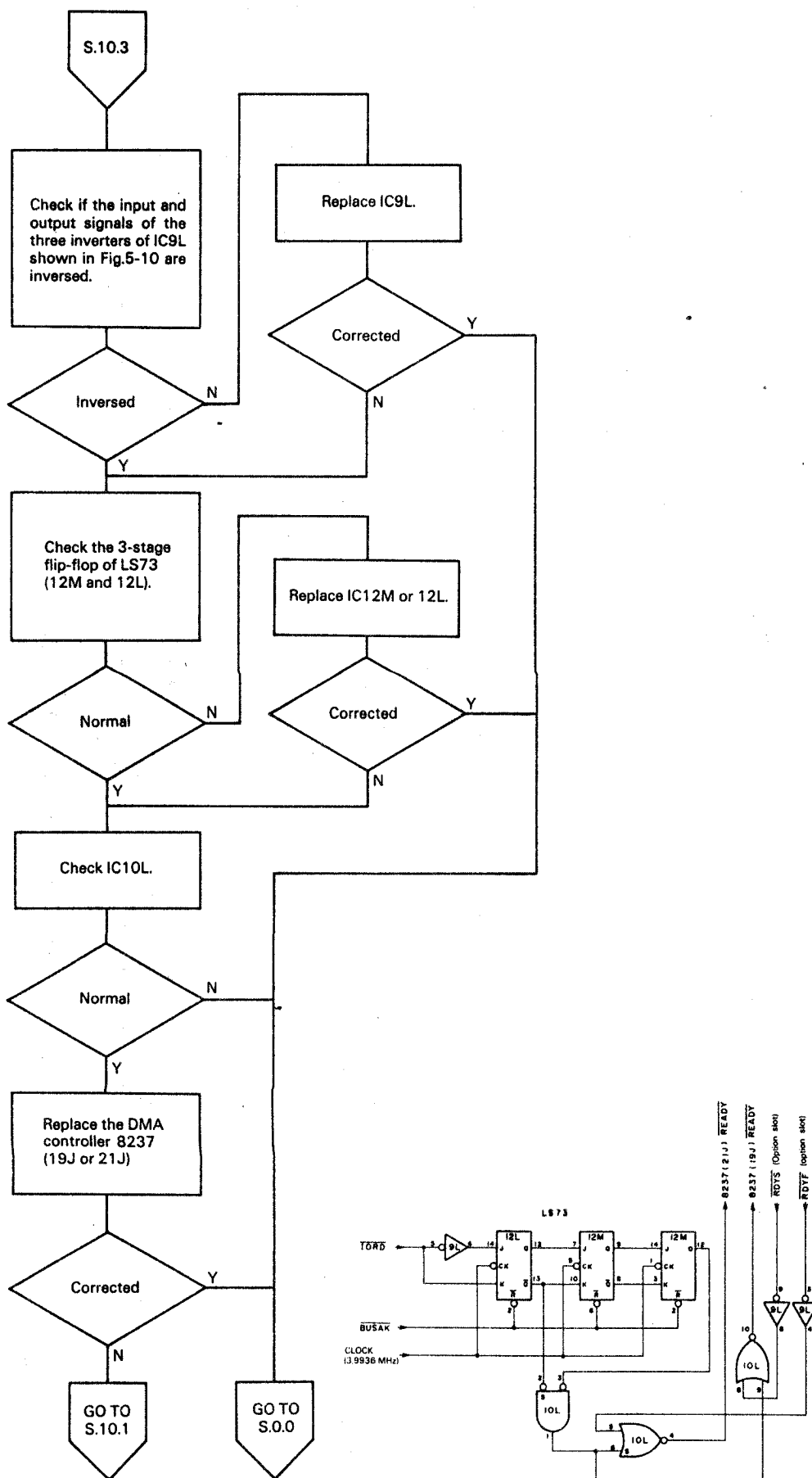
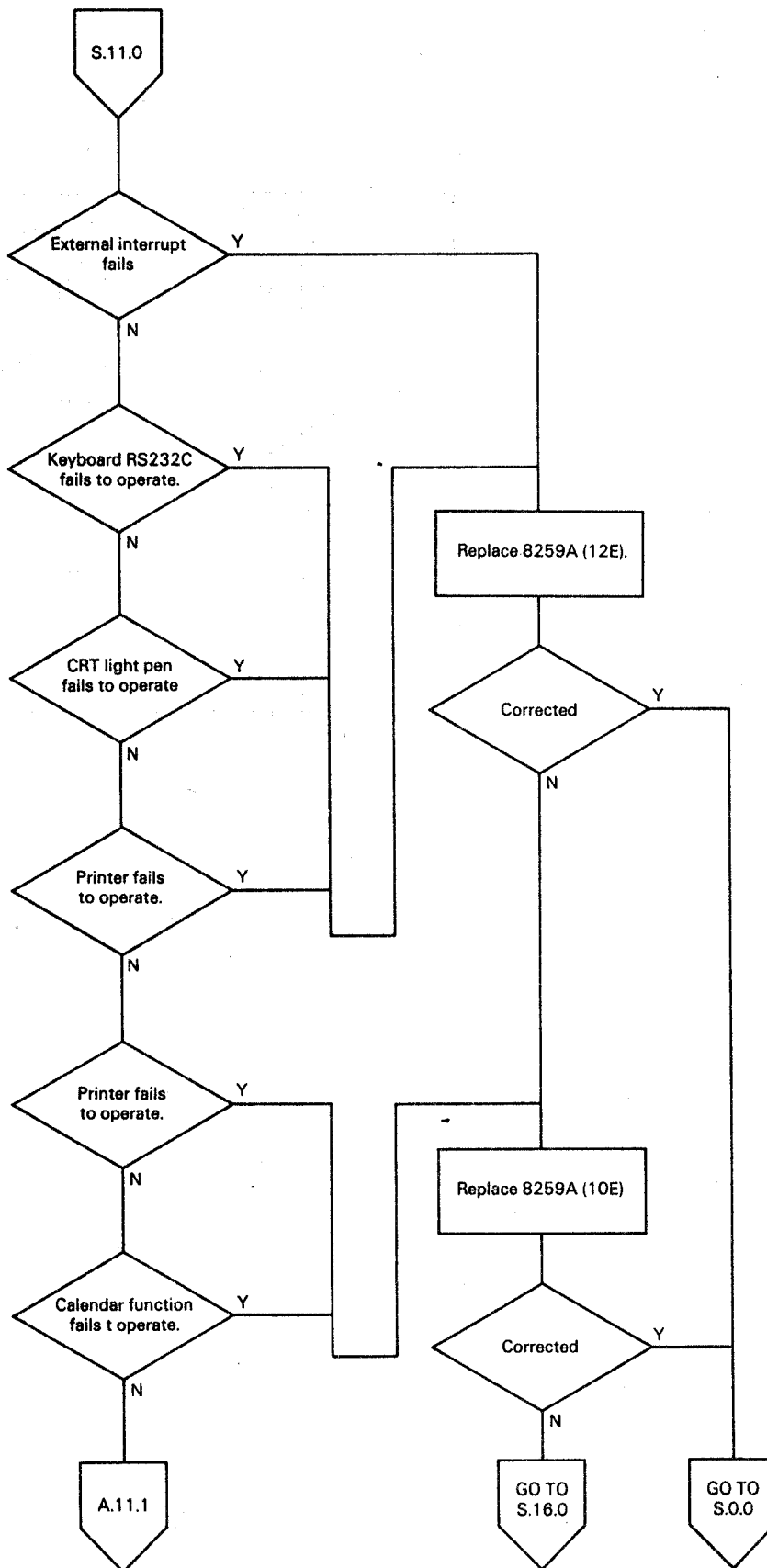
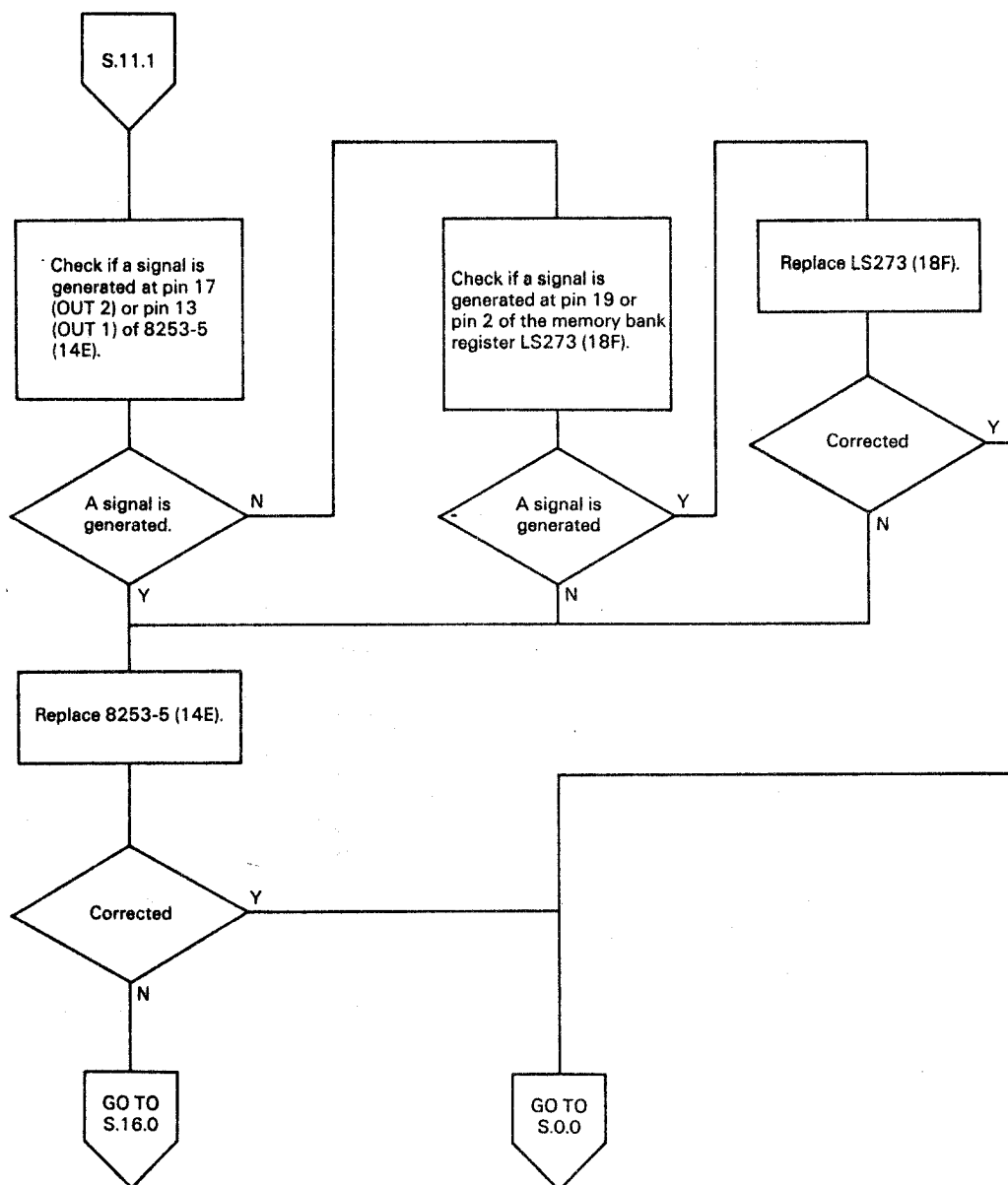


Fig.5-10

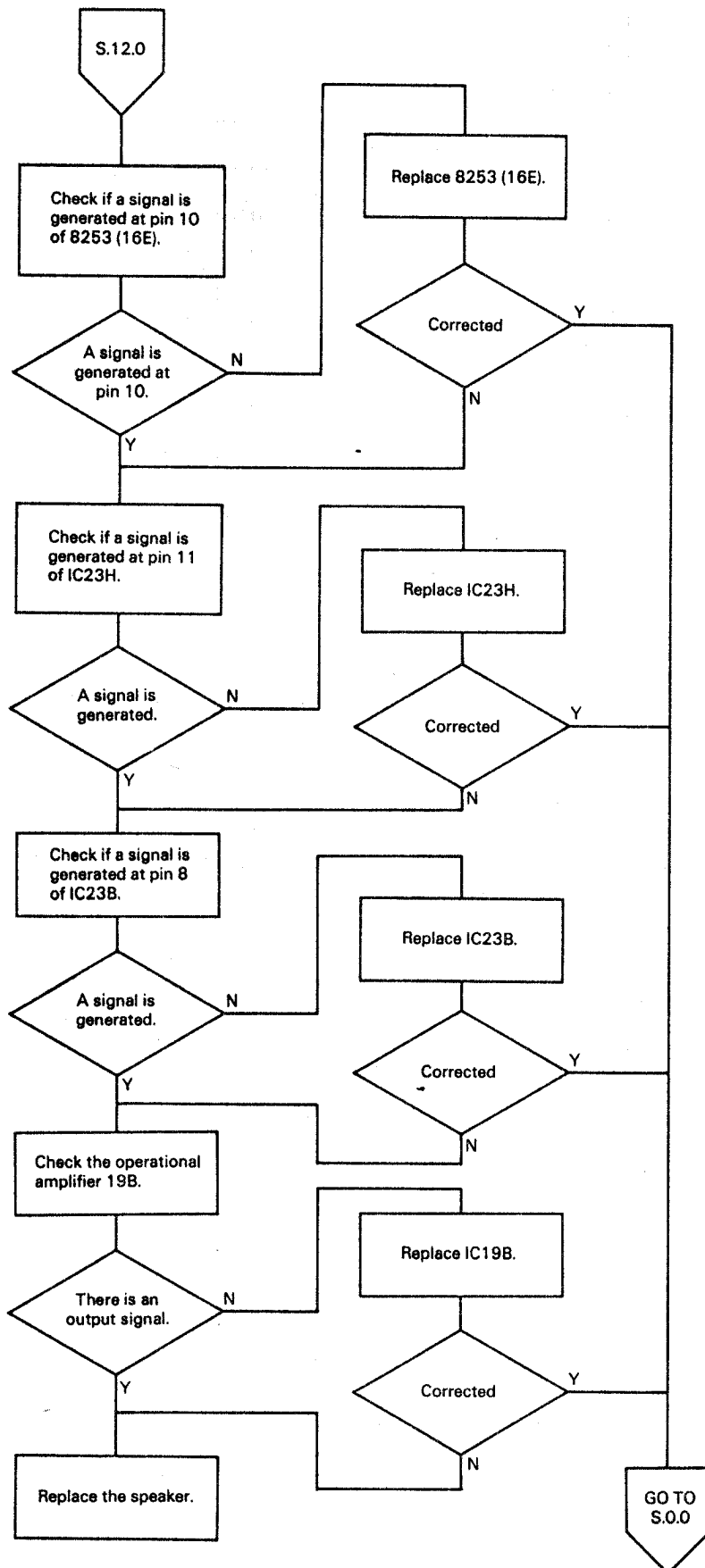
Failure of interrupt



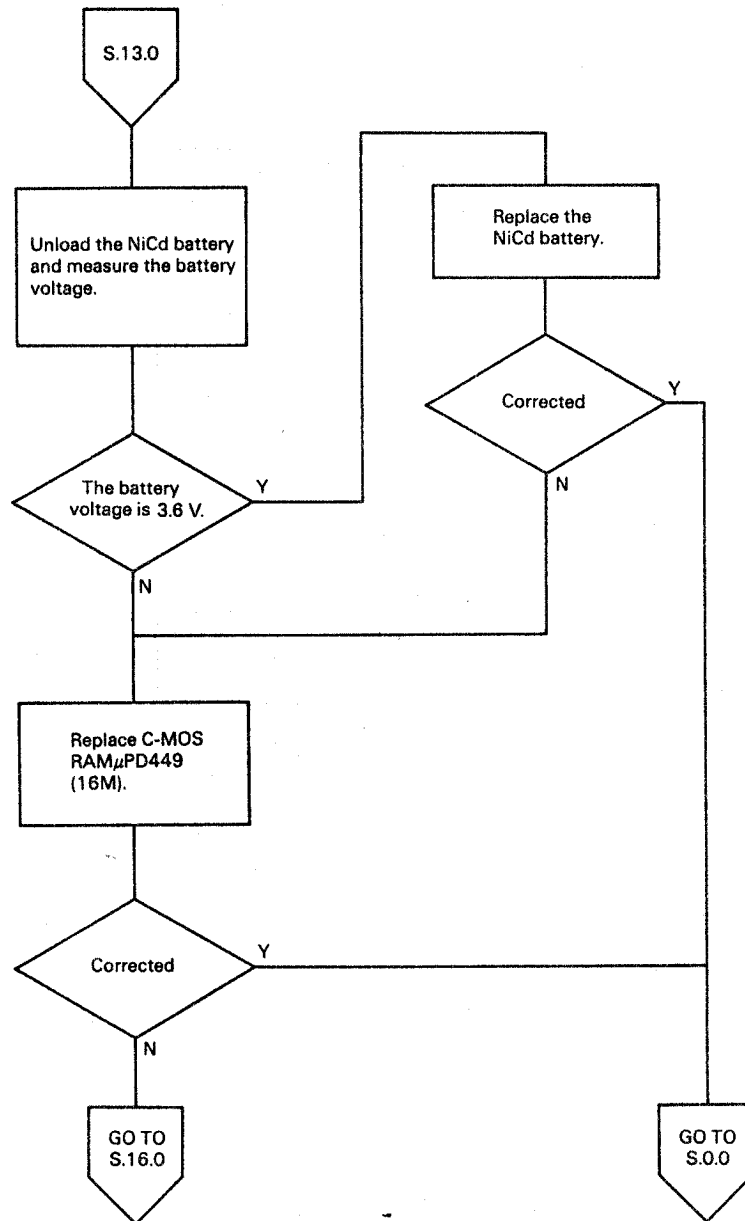
Failure of interrupt by soft timer



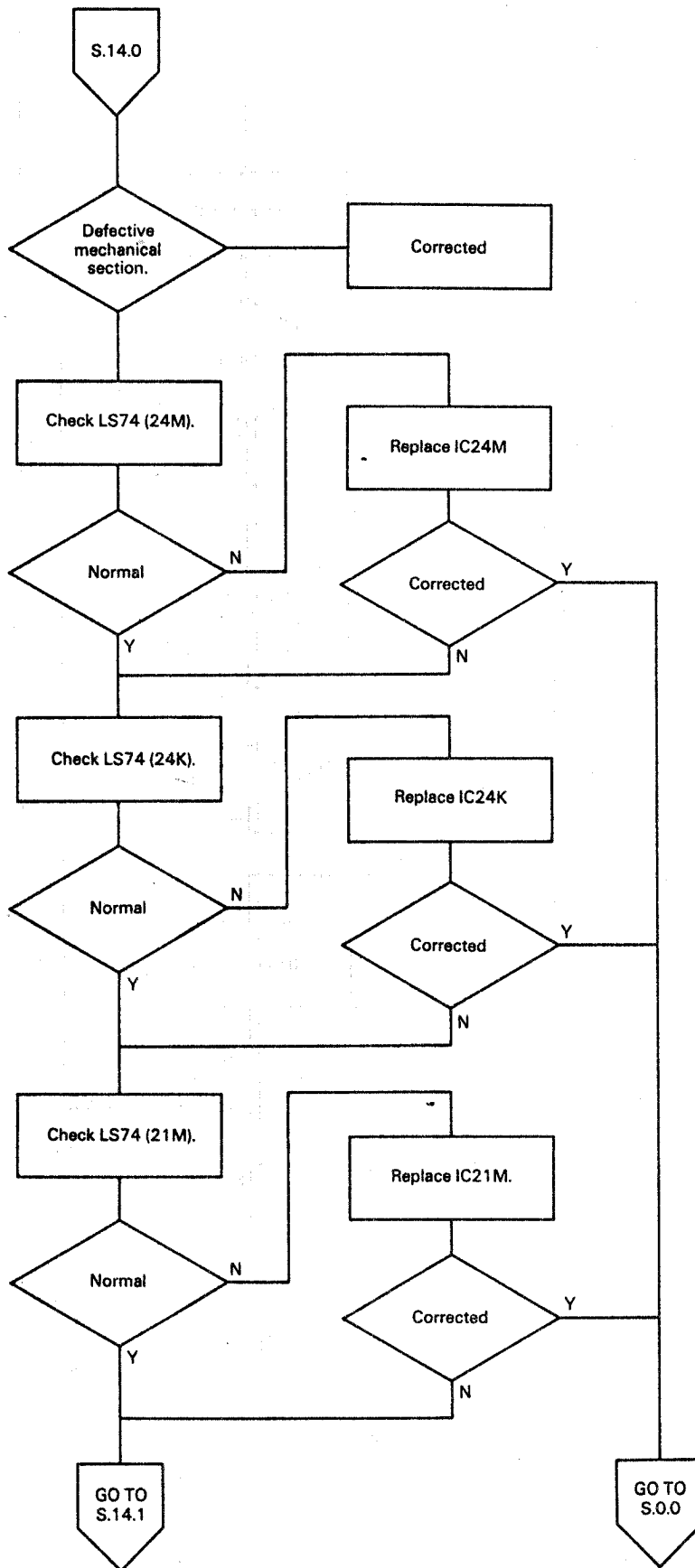
Speaker fails to operate.

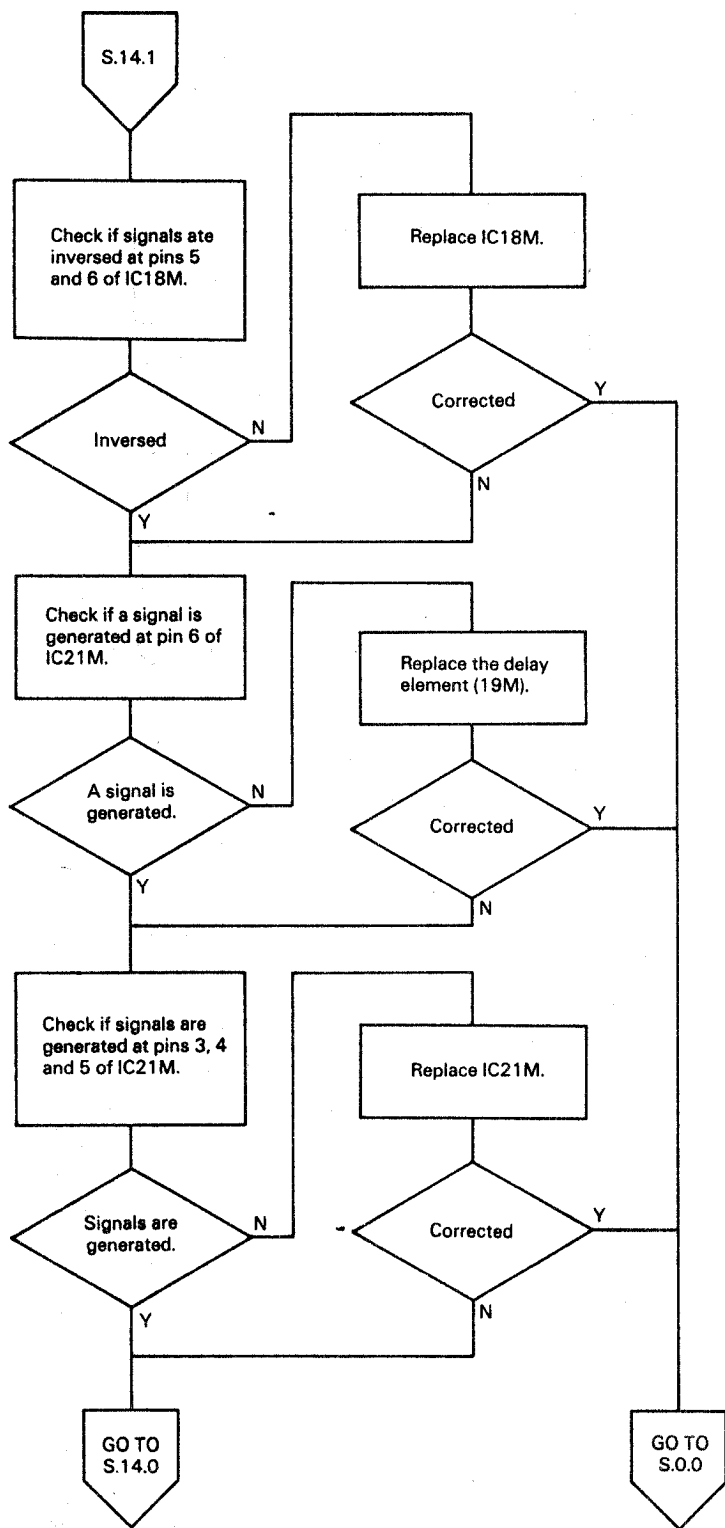


**Failure of battery back-up
C-MOS RAM fails to back-up.**

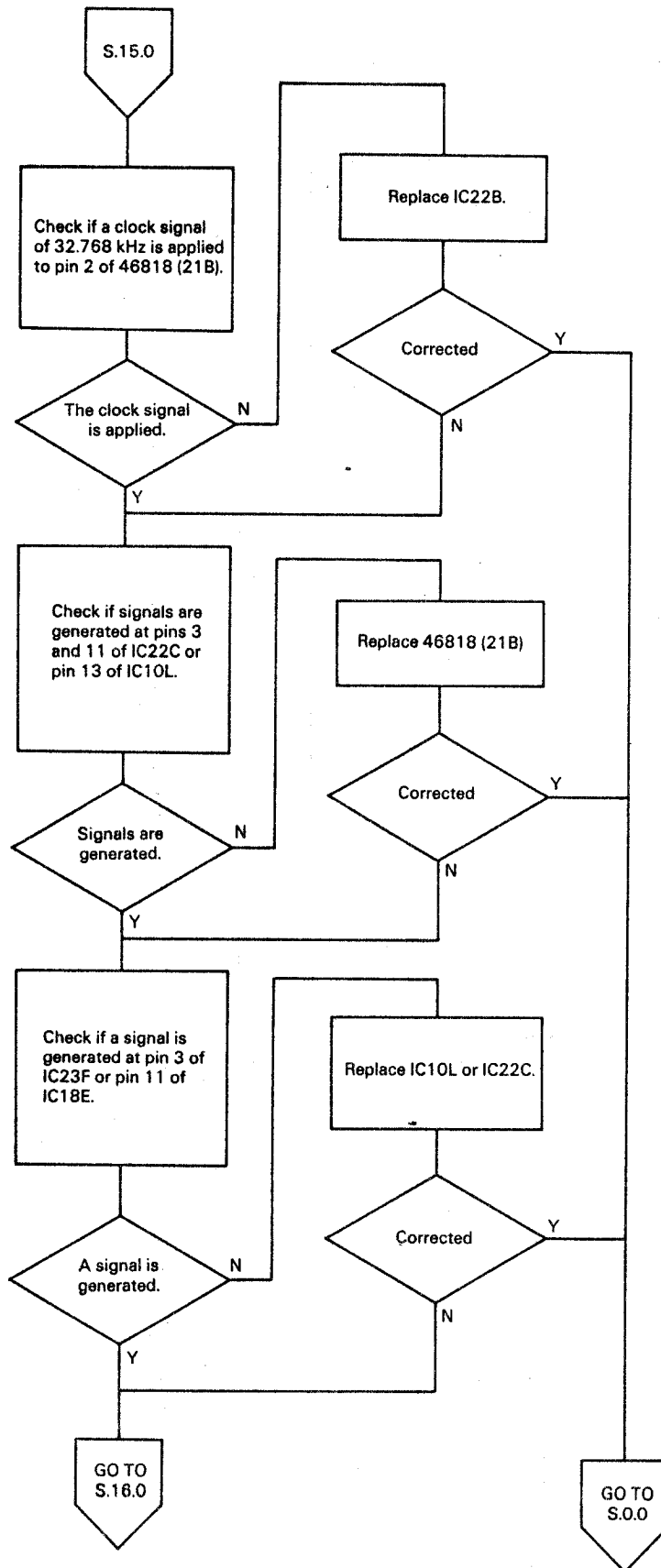


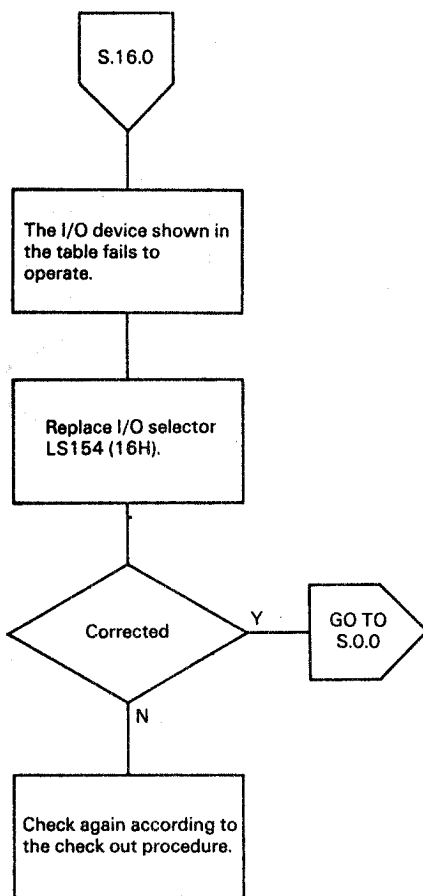
Reset switch fails to operate.





Defective calendar function





Counter timer	8253 (14E)
Counter timer	8253 (16E)
Interrupt controller	8259A (12E)
Interrupt controller	8259A (10E)
MPS'C	7201 (16B)
Printer	8255A (18B)
Memory bank register	LS273 (18F)
P-ROM	(14 M)
C-MOS RAM	(16 M)
Q10GMS	7220 (10A)
FDD motor control	-
Floppy disk controller	765 (14H)
Real time clock	46818P (21B)